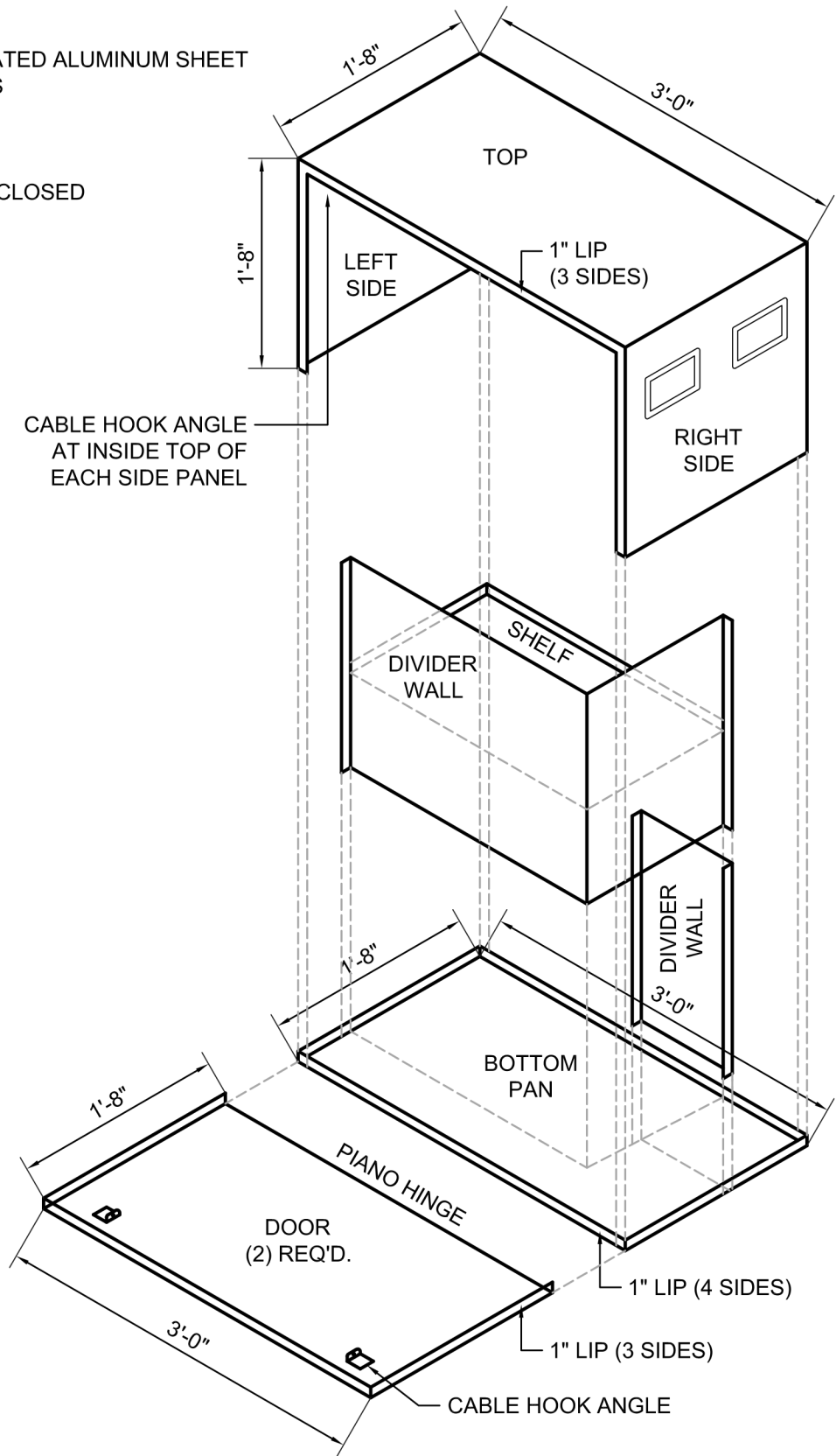
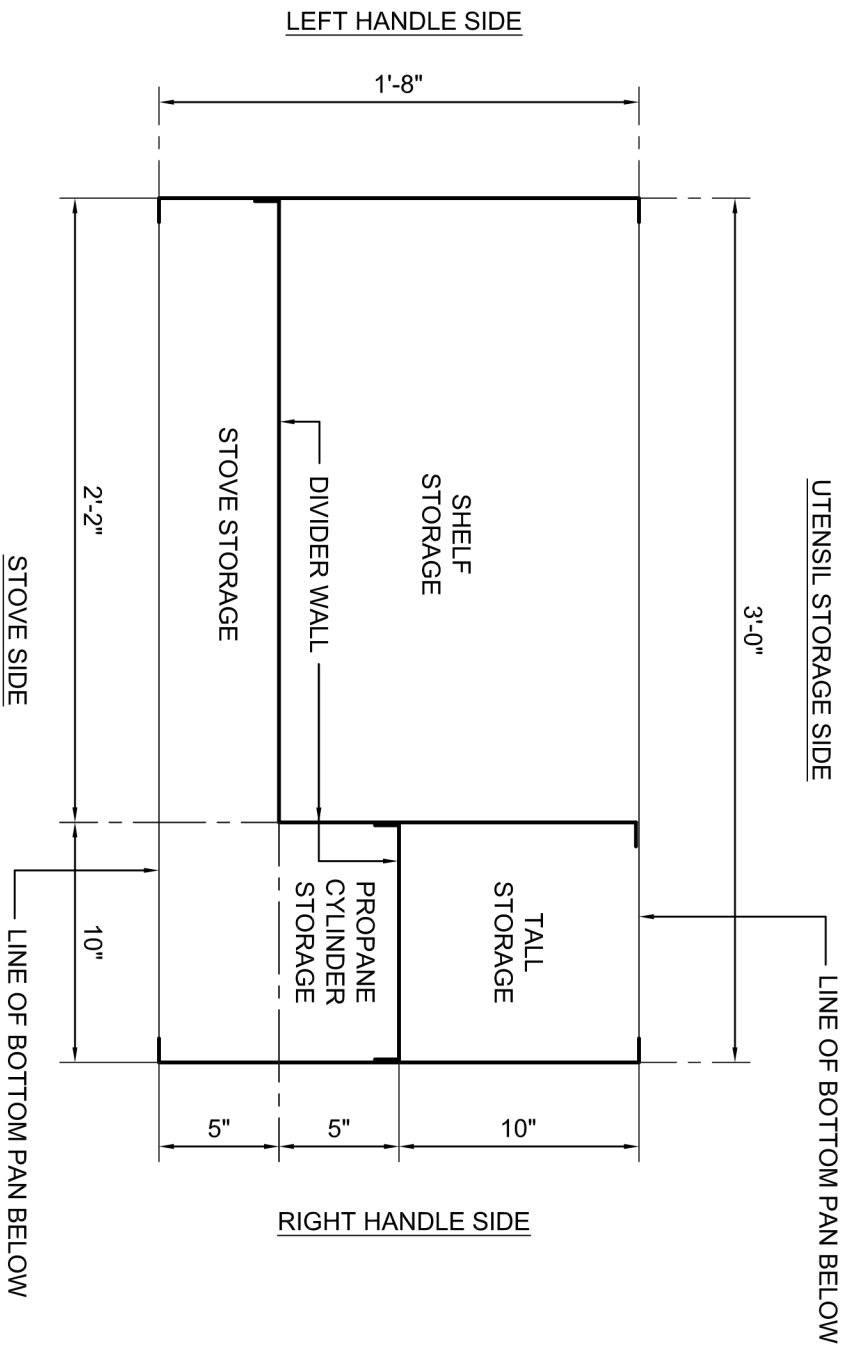


# MATERIALS LIST

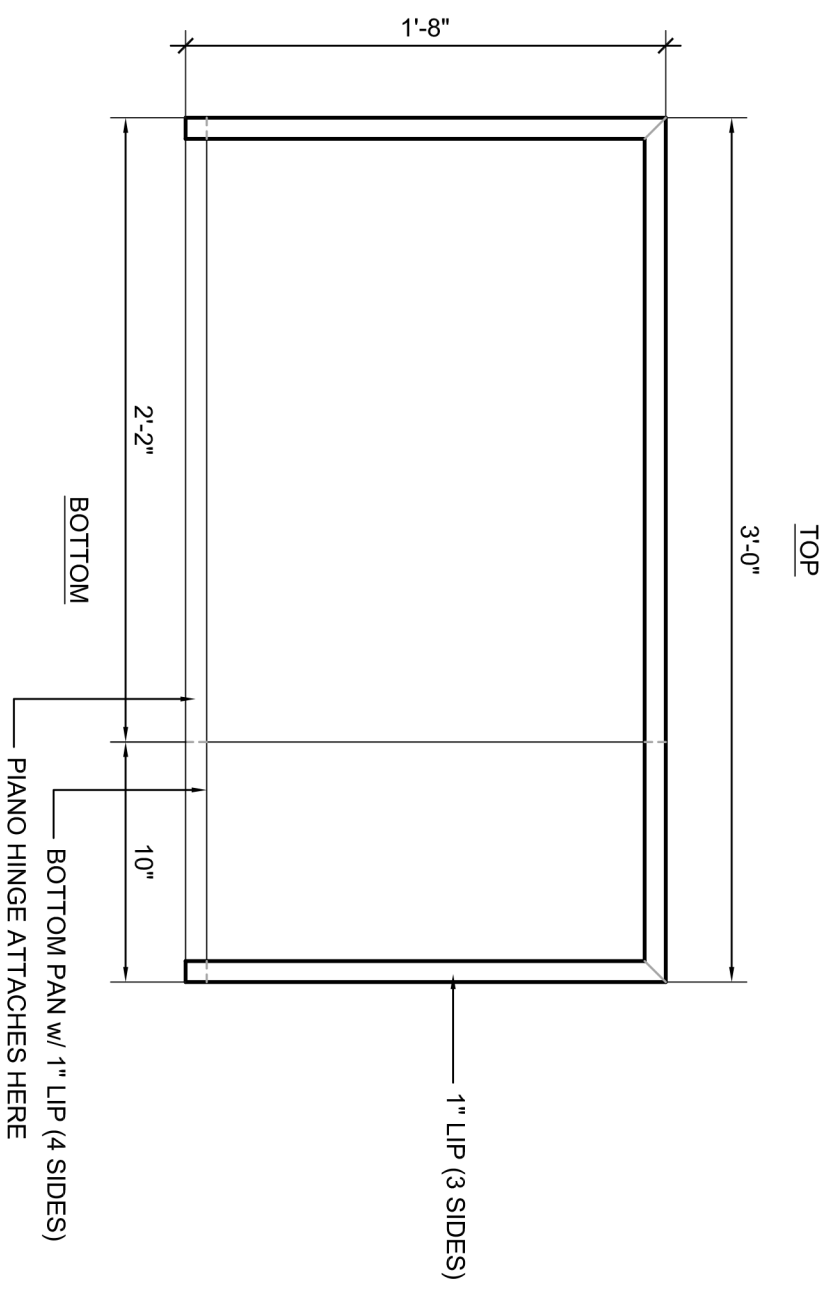
- 10 GA. (0.1019") POWDER-COATED ALUMINUM SHEET
- (4) SPRING-LOADED HANDLES
- (4) 30" LENGTHS OF CABLE
- (8) CABLE HOOK ANGLES
- (2) PIANO HINGES
- (4) CLASPS TO HOLD DOORS CLOSED



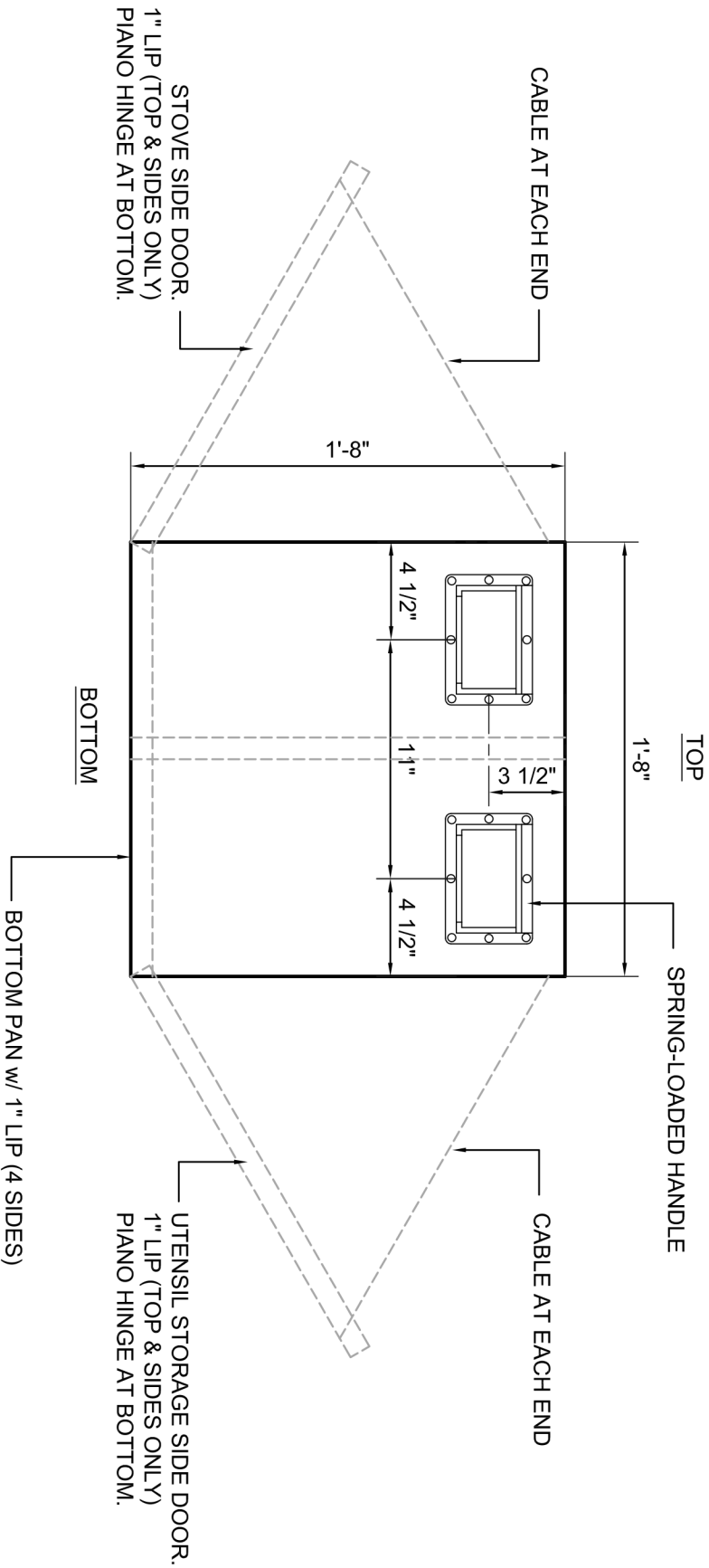
EXPLODED VIEW



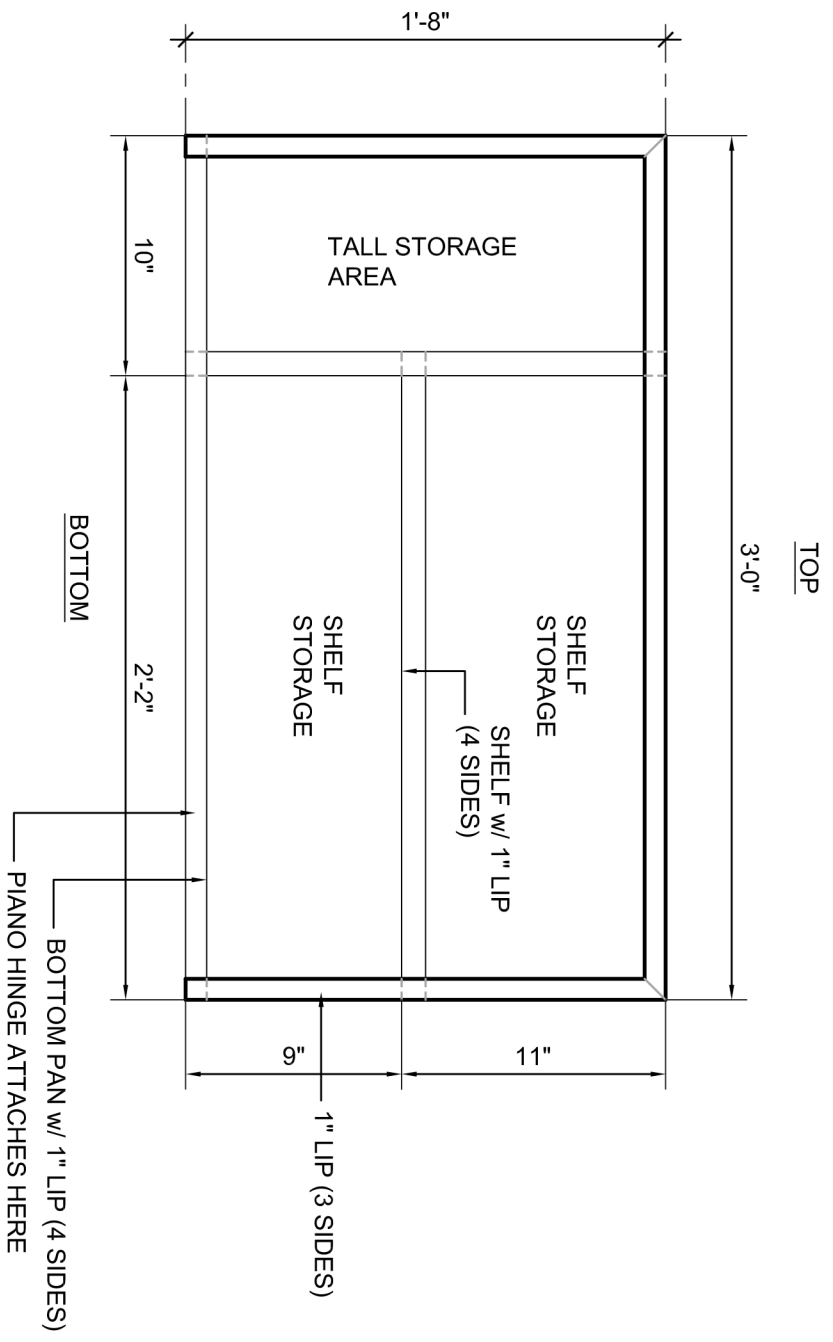
**CUT AWAY PLAN VIEW OF BOX**



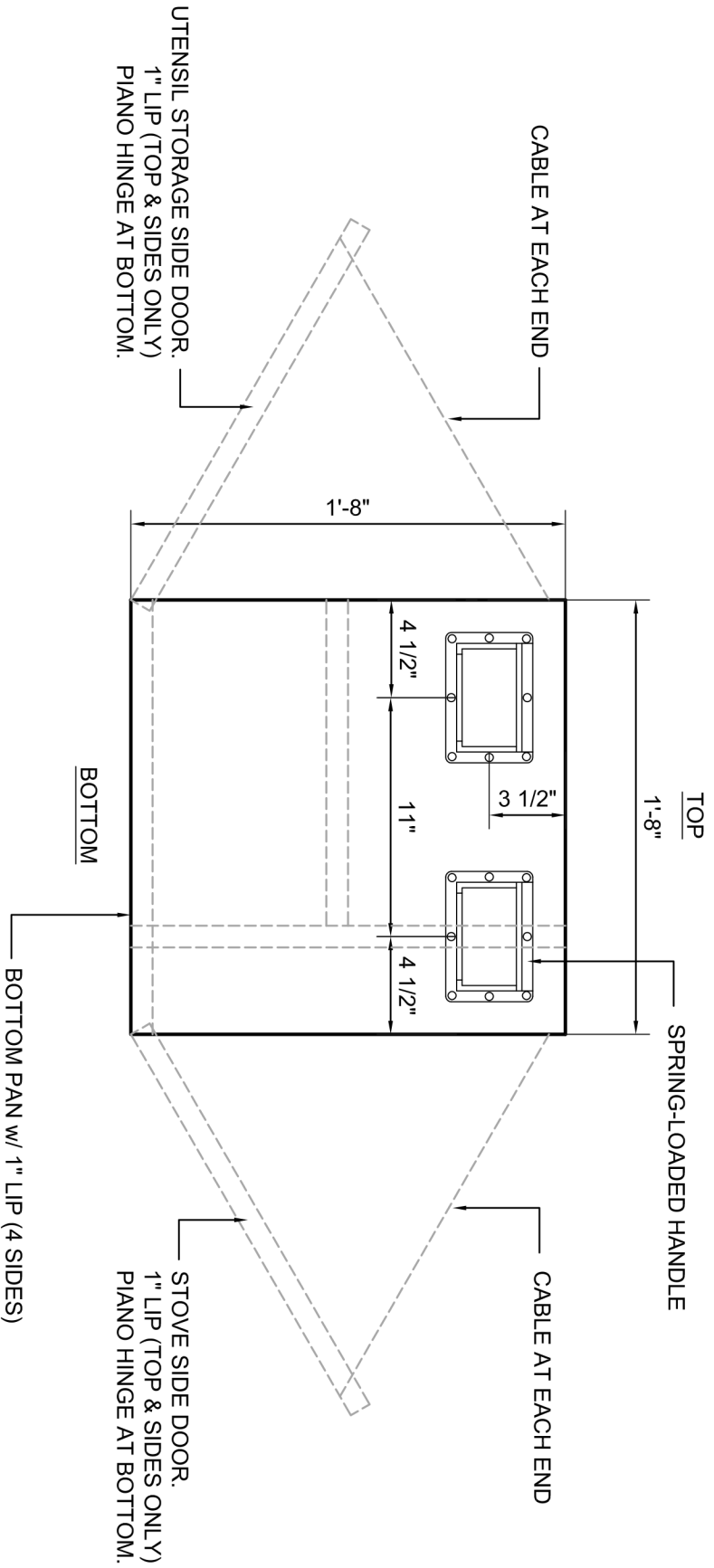
**STOVE SIDE ELEVATION**



RIGHT HANDLE SIDE ELEVATION



UTENSIL STORAGE SIDE ELEVATION



LEFT HANDLE SIDE ELEVATION